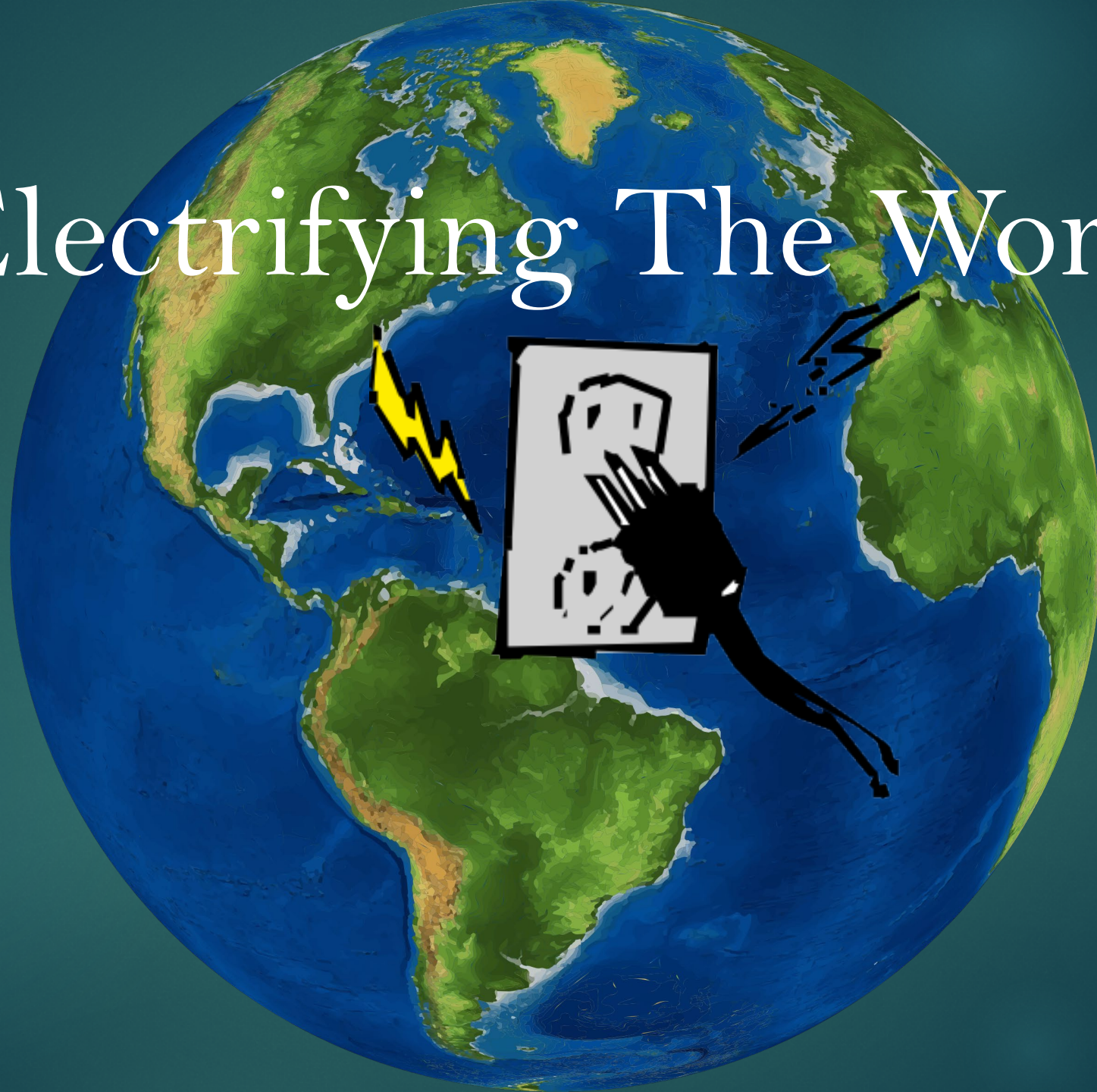
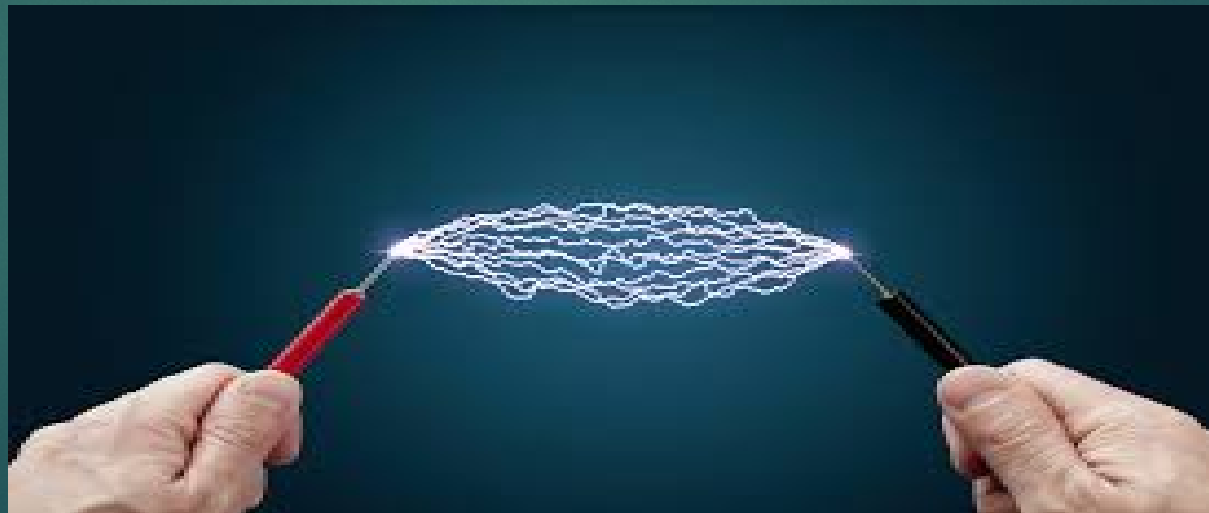


Electrifying The World!



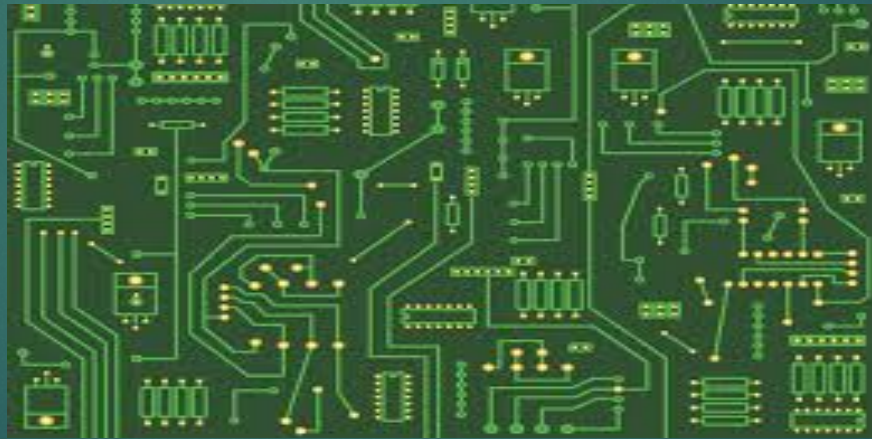
What is Electricity ?



What type of charge does an electron have ?



What is a circuit ?



Let's Act It out !

Casting

Teacher: Battery

Students: the path

Objects: electrons

Creation Station!

- ▶ What are we creating ? **Students will create a circuit**
- ▶ How long will we have ? **10 minutes (Stay on task)**
- ▶ Instructions

Step1) each student team take a battery, a light bulb, light bulb holder and a piece of wire.

Step2) Using wire strippers or sandpaper, carefully remove about $1/4$ - $3/8$ in (approximately 6-10 mm) of insulation from the ends of the wire.

Step3) Try to connect the battery, light bulb, light bulb holder and wire so the bulb lights up. Use tape if necessary. **Hint:**
Which way do electrons flow?

Would This Work?



Would This Work?



Would This Work?







What are some real life examples of a circuit?

Lets evaluate !

- ▶ Complete the evaluation worksheet on your own.
- ▶ Turn in your worksheet once you are done